

CALIFORNIA CLOSETS

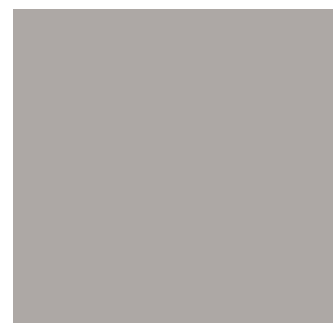
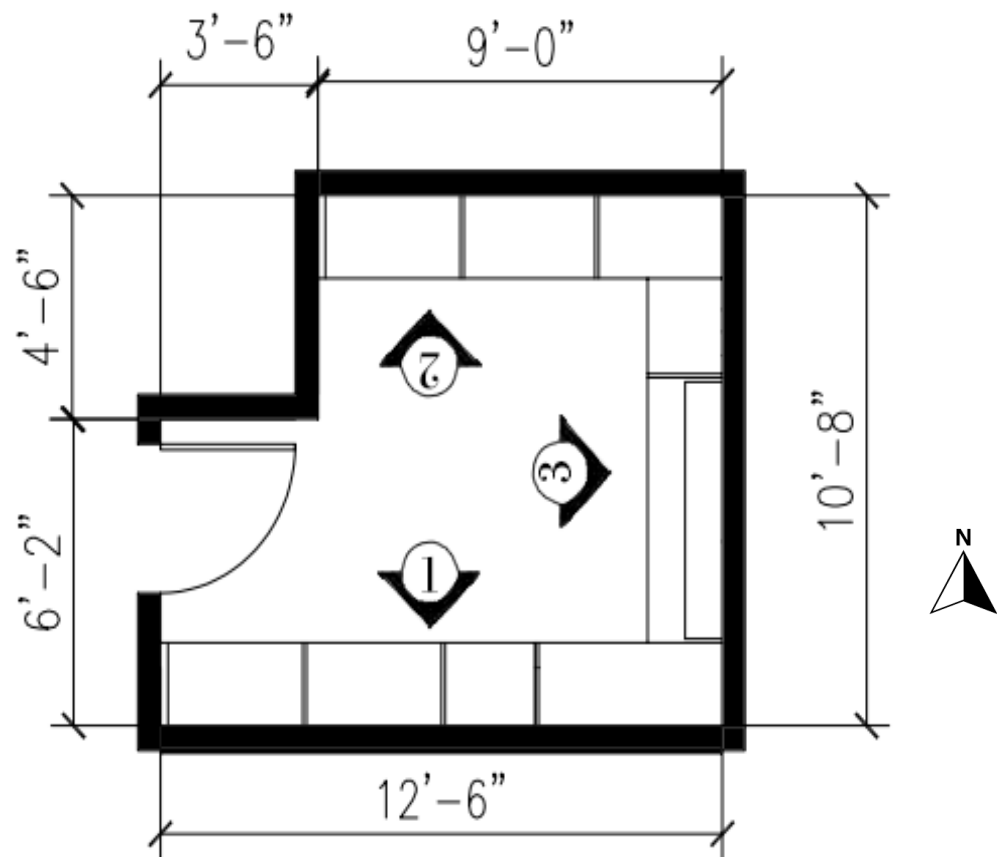
MASTER CLOSET

“Cycles In Life”

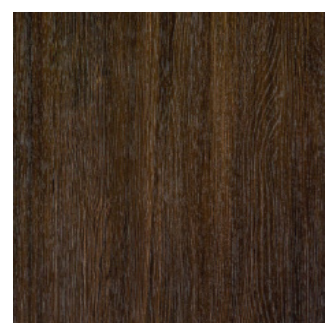


Friedensreich Hundertwasser's
Spiral of life

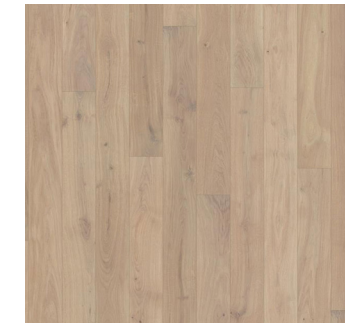
The inspiration for this design is from Friedensreich Hundertwasser's painting about the spiral of life which describes the fluent movement of life and how each season flows into each other. This design makes a space that functionally flows when you are navigating through and provided the ability to store clothing seasonally. As in the painting, the colors flow into each other and it shows you an understanding of how the closet would look. You would hang the clothes, starting with your short-sleeved shirts and tank tops in the first season, spring/summer. And then transition to winter/fall, where your long-sleeved shirts and coats would go. The spring season starts with cooler colors and gradually goes into warmer colors, which goes into summer. When fall hits, you will hang your clothes to go down to cooler colors for the winter. And then it becomes a cycle. The warmer clothes are meant to be the start of a cycle since it's brighter and happier in the summer, and then in the winter, it would be the end of the cycle as it gets darker and colder. This space also shows a spiral layout in the floor plan.



Proper Grey
Sherwin Williams



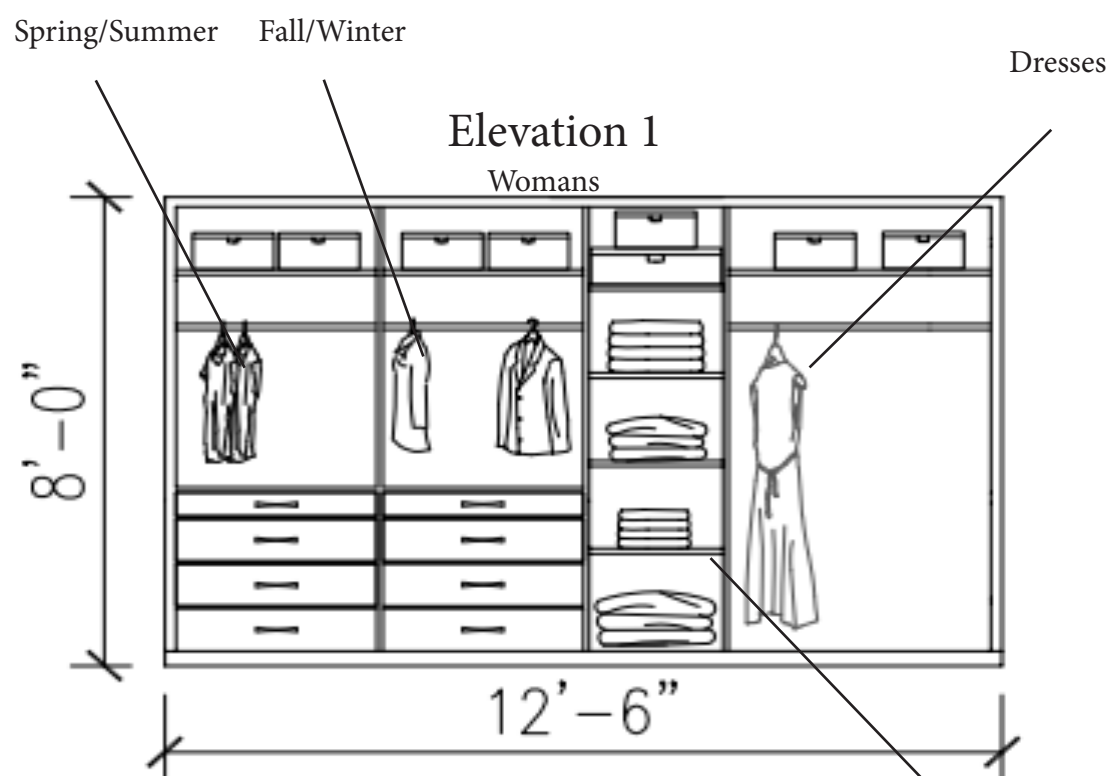
Cool Avenue
CC Wood Grain™ Collection



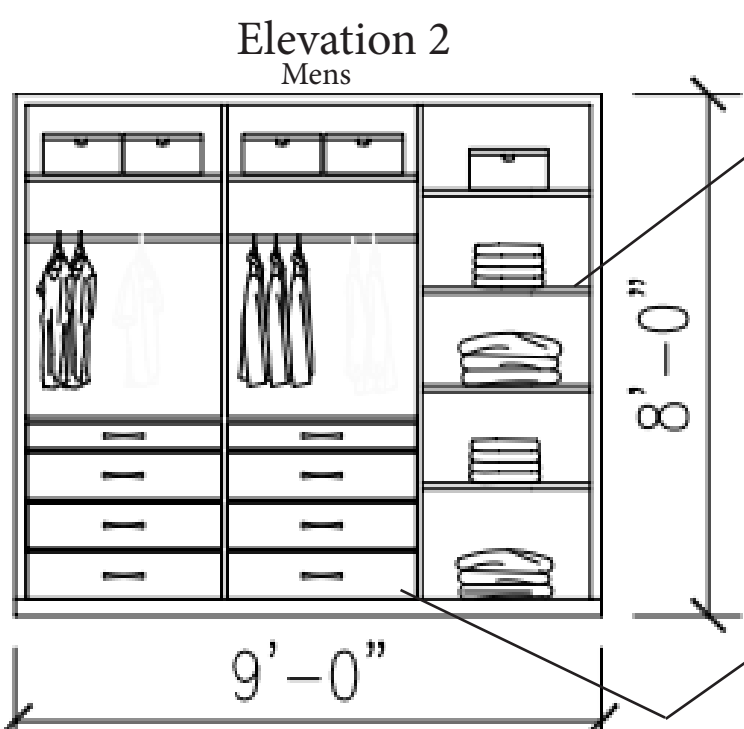
Oak Muse
Kahrs



Elite Bow Handle

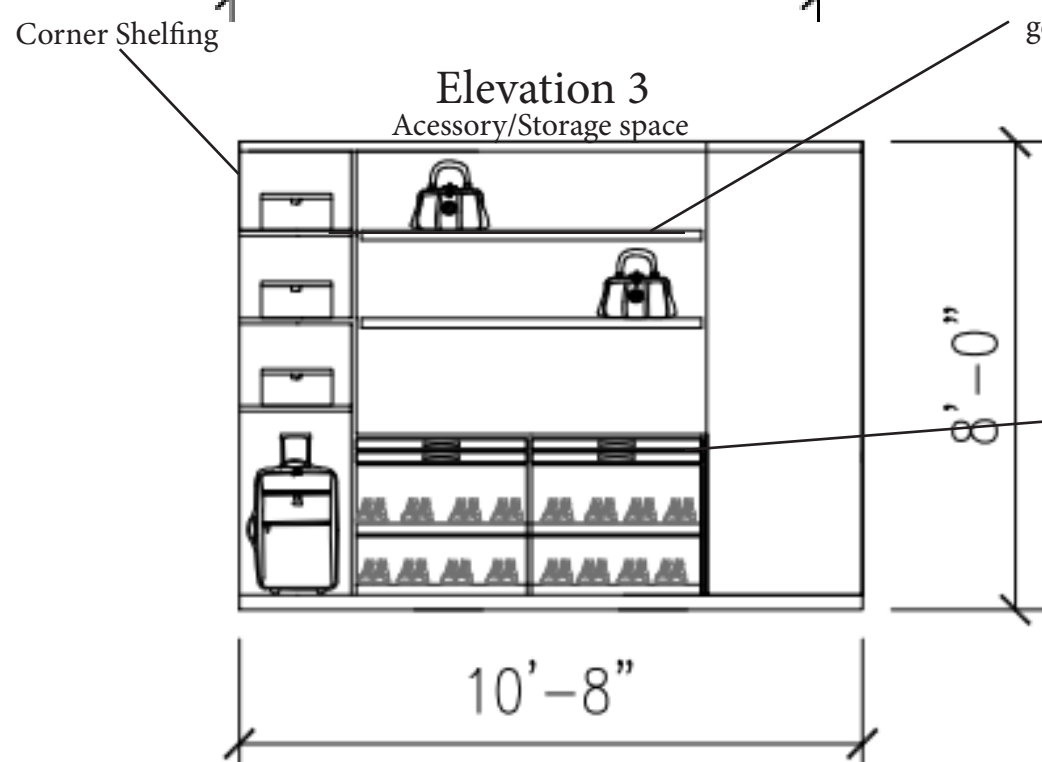


These shelves would represent each season, and each shelf would have the correct attire for the season. The top shelf is for additional storage.



The Drawers are for your pants. One side would be your spring/summer, and then your other side would be fall/winter

Open shelving is used for easy access to grab handbags and to get dresses from one side



One side of the closet has shorter shirts, gradually transforming into longer-sleeved shirts/jackets reflecting the seasonal flow. The bottom drawers can be used for pants. The Corner and open shelving should provide additional storage for bags and more clothes if needed. This layout is designed to be functional and spacious, allowing two people to easily access their belongings and get ready in a shared, well-organized space.



The layout is to flow seamlessly through the seasons, starting with the short-sleeve shirts and transitioning into long-sleeve shirts and jackets. The bottom drawers are explicitly designated for pants as you move along the space. Next to the hanging units and drawers is additional storage space for clothing, and next to it is a designated area to hang dresses. You can quickly grab dresses because of the open shelving where the accessory drawers are.